

ONLINE AUCTION

EDGE
TOOL & DIE

Due to Owner Retiring
Complete Tool & Die Shop
440 Thompson Dr., Cambridge, Ontario



4 MACHINING CENTERS AVAILABLE

DAHLIH DL-MCV1700 CNC VERTICAL MACHINING CENTER



600-TON CAP.

2 PRESSES AVAILABLE

USI-VICKERS CLEARING S-600-120-72 STRAIGHT SIDE PRESS



2012

9 MILLS AVAILABLE

FIRST LC-185VS-B VERTICAL MILL



2012

2 LATHES AVAILABLE

ECOCA SJ-2260G LATHE

CLOSES: Thursday June 12th, 11AM ET

Inspection: Wednesday June 11th, 9AM – 4PM or By Appointment



INFINITY
Asset Solutions

- AUCTIONS
- LIQUIDATIONS
- FINANCING
- APPRAISALS

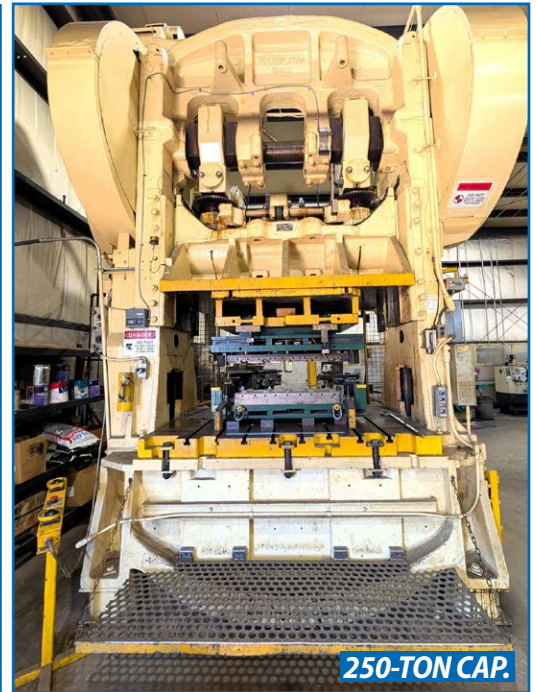
905.669.8893
infinityassets.com

BidSpotter



2001

TAKUMI V11A CNC VERTICAL MACHINING CENTER



250-TON CAP.

HAMILTON 849 STRAIGHT SIDE PRESS



DAHLIH DL-MCV1020 CNC VERTICAL MACHINING CENTER



8,000LB CAP.

ROWE 1003-DSJ UNCOILER

CNC MACHINING

2004 **DAHLIH DL-MCV1700** CNC Vertical Machining Center, s/n 3001090165, 6,000 RPM, Fanuc Series 18-M CNC Control, Travels: X-66.95", Y-33.45", Z-29.53", (32) ATC, Habor HBO-750PSB3-11 Chiller, Yeoshe V23A2R-1X Hydraulic Pump

2001 **TAKUMI V11A** CNC Vertical Machining Center, s/n G0975, Mitsubishi MELDAS 500 CNC Control, Travels: X-43.3", Y-20", Z-22", 25" x 53" Table, CAT40, Habor HBO-250PTB Chiller

DAHLIH DL-MCV1020 CNC Vertical Machining Center, Fanuc Series O-M CNC Control, BT40, s/n 1020868

ZPS MCFV 1680 NT CNC Vertical Machining Center

PRESSES

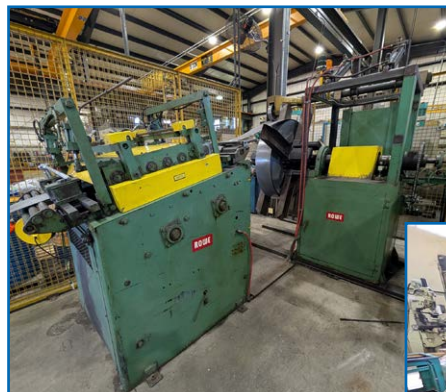
USI-VICKERS CLEARING S-600-120-72 Straight Side Press, 600-Ton Cap., 72" x 120" Bed, 29" – 53" Shut Height, 20" Stroke

HAMILTON 849 Straight Side Press, 250-Ton Cap., 60" x 84" Bed, 24" – 34" Shut Height, 12" Stroke

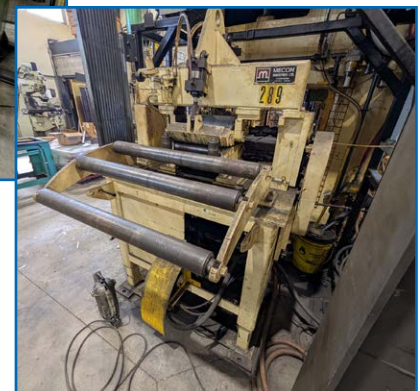
ROWE 1003-DSJ Uncoiler, s/n 24910, Max Coil ID 25", Min Coil ID 18", Max Coild OD 72", Max Coil Width 31", Max Wight 8,000lbs

ROWE C3-30 Straightener, s/n 24911, Max Material .150" Mild Steel, Min Material .020" Mild Steel, Max Coil Width 30", # Rollers 11 -7 Straightening – 4 Pinch, Rollers 3.5"Dia. 4.5" C to C

MECON F30PL Feeder, s/n 1017, Max Coil Width 31"



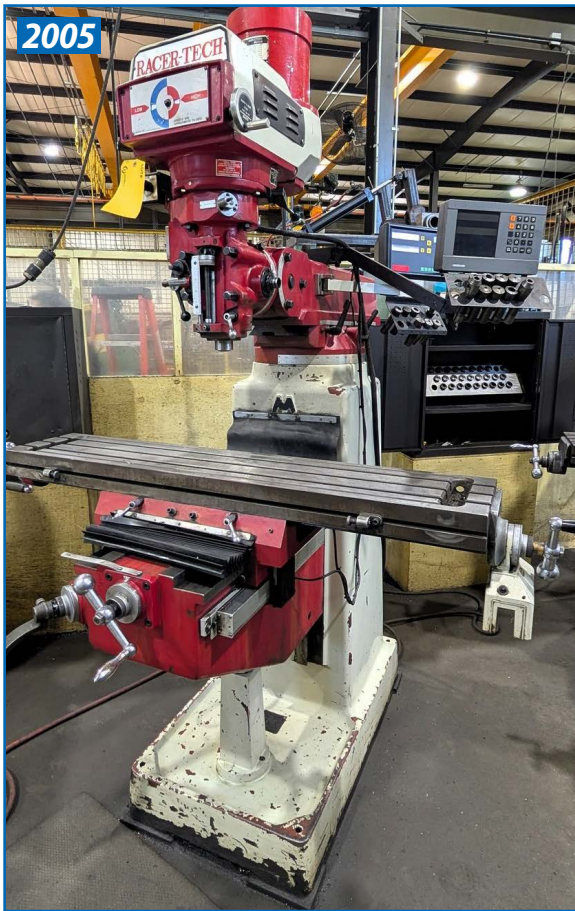
ROWE C3-30 STRAIGHTENER



MECON F30PL FEEDER

BID ONLINE AT

BidSpotter.com



RACER-TECH RMC3 VERTICAL MILL



HAVLIK C6242 LATHE



DARBERT VBM-4 VERTICAL MILL



CHEVALIER FSG-3A818 SURFACE GRINDER



TOS-KURIM FA5B-H UNIVERSAL MILL



BLANCHARD NO 18 ROTARY SURFACE GRINDER



NUWAY PFG-CL3060AH SURFACE GRINDER

MILLING MACHINES

2005 **RACER-TECH RMC3** Vertical Milling Machine, Heidenhain 2-Axis DRO, Align Power Feed, Speeds to 3,800 RPM < 3HP, 10" x 50" Table, s/n 746024

(2) 2012 **FIRST LC-185VS-B** Vertical Milling Machines, Heidenhain DRO, 10" x 50" Table, 31" Longitudinal Travel, 16.3" Cross Travel, 15.3" Vertical Travel, Power Draw Bar, s/n's 10303566, 10303573

(3) **FIRST LC-185VS** Vertical Milling Machines, Heidenhain DRO, 10" x 50" Table, 31" Longitudinal Travel, 16.3" Cross Travel, 15.3" Vertical Travel, s/n's 30505189, 4101055, 51202051

DARBERT VBM-4V Vertical Milling Machine, Heidenhain 2-Axis DRO, 18" x 75" Table, s/n 6189

TOS-KURIM FA5B-H Universal Milling Machine, Heidenhain 3-Axis DRO, 18" x 79" Table, s/n 24382

ZAYER Horizontal Milling Machine, 12" x 63" Table

LATHES

2012 **ECOCA SJ-2260G** Lathe, Fagor 2-Axis DRO, 24" Swing, 76" Bed, 3.25" Bore, 3-Jaw Chuck, Tool Post, Multi-Position Tool Post, s/n E1TAB0587

HAVLIK C6242 Lathe, Mitutoyo 2-Axis DRO, 22" Swing, 80" Bed, 3.25" Bore, 3 & 4-Jaw Chucks, Tailstock, Tool Post, Steady Rests, s/n 141

EDM'S

FANUC CNC Wire EDM

CHMER CNC CD-305G Wire EDM

GRINDERS

NUWAY PFG-CL3060AH Surface Grinder, s/n 1035111, Saddle 11.75", Slide 23.5", Table to Spindle Center 19.5"

CHEVALIER FSG-3A818 Surface Grinder, s/n M384A005, Saddle 8", Slide 18", Table to Spindle Center 18"

(3) **CHEVALIER FSG-618M** Surface Grinders, Saddle 6", Slide 18", Table to Spindle Center 19.5", s/n's A3848002, A3936007, A3937002

KENT KGS-618 Surface Grinder, Saddle 6", Slide 18", Table to Spindle Center 21"

BLANCHARD No 18 Rotary Surface Grinder, s/n 3908

POWERMATIC 30 Belt / Disc Grinder, s/n 65-5272-3, Disc Size 10"

FORD SMITH 40-P Pedestal Grinder, s/n 6800 8

(2) **RYOBI 8"** Bench Grinders

VISIT INFINITYASSETS.COM FOR VIDEOS OF MACHINERY IN OPERATION



3 RADIAL DRILLS AVAILABLE

MAS V050 RADIAL ARM DRILL

DRILLS

(2) **MAS V050** Radial Arm Drills, 6' Arm, s/n's 297, 189
MAS V0-32 Radial Arm Drill, 4' Arm, s/n 653

SAWS

BAXTER VERTICUT 115B Roll-in Bandsaw, s/n 4261
BAXTER VERTICUT 1153 Roll-in Bandsaw, s/n 5387

CMM

BROWN & SHARPE MVAL PFX 4-5-4 CMM, s/n 0997-1912

WELDERS

THERMAL DYNAMICS CUTMASTER 32 Plasma Cutter
HOBART Stellar AT DC-CC/CV Welder, s/n KK221602 w/ **MILLER** CS-22 P12 Wire Feeder & **BERNARD** T-Gun
THERMAL ARC Welder

MATERIAL HANDLING

HYSTER S80XLBCS Propane Forklift, 7,800lb Cap., 172" Max Lift, 3-Stage Mast, Side Shift, Solid Tires, s/n D004D08524X
 (2) Jib Cranes
MOBILE MATERIALS B70FP Hydraulic Platform Lift, 1,500lb Cap., s/n 8221
MOBILE MATERIALS B50FP Hydraulic Platform Lift, 1,500lb Cap., s/n 8293
ECOA Platform Lift, 500lb Cap.
SA ARMSTRONG FH-60 Hydraulic Platform Lift, 750lb Cap.

(2) **ECOLIFT, KLETON** Pallet Jacks

PLANT SUPPORT

EMPIRE EF-2430 Sandblast Cabinet, s/n C-8682
 2015 **Q-AIR** QMV-30WDD Dust Collector, s/n 2015011, 575VAC, 3 PH, 3HP, 3A
NILFISK-ADVANCE Convertamatic 200B Floor Cleaner
PLUS: Precision Instruments, Micrometers, Verniers, Height Gauges, Tooling, Metal Horses, Power & Hand Tools, Shop Carts, Racking, Tool Holders, Angle Plates, Heavy Duty Tool Storage Cabinets, Dump Hoppers, Drill Sharpener, Welding Supplies, Rigging Chains, Swivel Eye Bolts, Shackles, Office Equipment and Much More!



2 AVAILABLE

BAXTER VERTICUT 115B
 ROLL-IN SAW



BROWN & SHARPE MVAL
 PFX 4-5-4 CMM



PARTIAL VIEW OF SUPPORT EQUIPMENT

TERMS OF SALE



Payment: All payments must be in Cash, Certified Funds, Wire Transfers, or Company Cheques, which must be accompanied with a bank letter guaranteeing irrevocable payment to Infinity Asset Solutions Inc. Invoices up to \$2,000 can be paid by Visa, Mastercard or Interac.
 All bidders must register on Bidspotter by Wednesday June 10th, 5pm.
 A 18% buyers premium will be added to all Online purchases.
 A \$2,000 refundable security deposit is required upon online registration.
 A 25% deposit is required at time of purchase, balance due by Friday June 12th, 2025, 4pm. NO EXCEPTIONS.

All goods are sold "As Is, Where Is", ALL SALES ARE FINAL. All subject to prior sale. Complete terms and conditions including removal procedures, are available on our website.

REMOVAL TIMES

All items by Friday July 4th.

NOTE: EXCLUSIVE RIGGING MAY APPLY, VISIT INFINITYASSETS.COM FOR MORE INFORMATION

This brochure is meant merely as a guide. Infinity Asset Solutions makes no guarantee, expressed or implied, as to the accuracy of the information in this brochure. Buyers should inspect the goods beforehand to satisfy themselves.



AUCTIONS • LIQUIDATIONS • FINANCING • APPRAISALS

63 Maplecrete Road, Concord, Ontario L4K 1A5 Canada

infinityassets.com • Tel: (905) 669-8893